



PATHWAY TO 

# PROSPERITY

# FOR ALL

ASUE IGHODALO'S  
MANIFESTO  
EDO 2024



# Contents

|           |  |
|-----------|--|
| <b>01</b> | <b>FOREWORD</b>                                    |
| 01        | Who We Are   |
| 03        | Where We Are                                       |
| <b>02</b> | <b>WHERE WE WANT TO BE</b>                         |
| 05        | The Prosperity Agenda                              |
| 07        | My Vision for Our Future                           |
| 09        | My Commitment                                      |
| <b>03</b> | <b>HOW WE'LL GET THERE:<br/>PROSPERITY FOR ALL</b> |
| 11        | Wellbeing of All Our People                        |
| 19        | Growing Our Economy                                |
| 33        | Good Governance                                    |
| 37        | Security, Law & Order                              |
| 41        | Environmental Sustainability                       |
| <b>04</b> | <b>ASUERINME</b>                                   |
| 45        | The Man  |
| 47        | His Past Contributions                             |
| 49        | His Deputy   |
| 51        | Conclusion   |

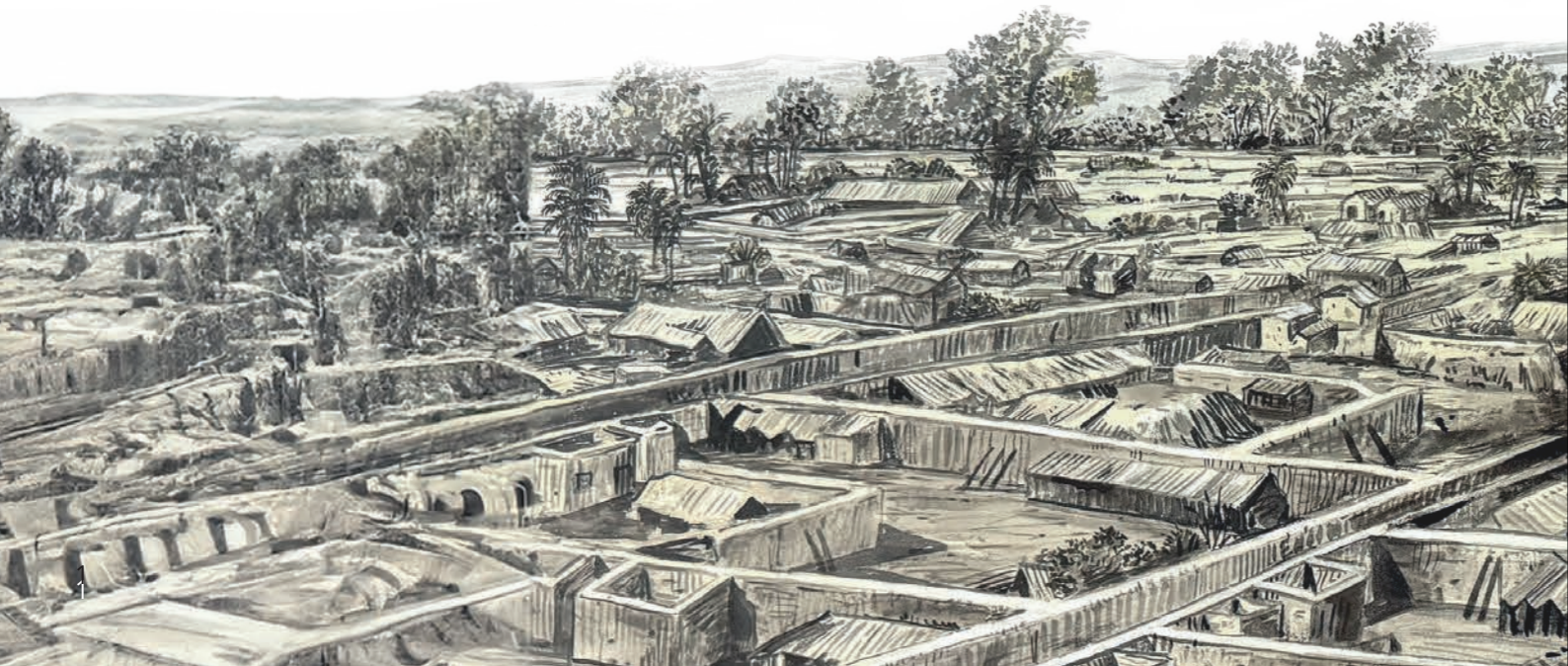
---

“Long before the invention of mechanical equipment, our forefathers built the Great Benin Moats (Great Wall of Benin)- one of the greatest earthworks known to mankind. Imagine the ingenuity, artistry and hard work required to build such a monumental structure without modern machinery.

Before street-lights were conceived, the well-planned streets of our land were adorned with lights made from oil palm kernels.

By dint of hard work, our forebears built one of Africa’s greatest civilisations. The works of their hands provide sufficient evidence of their advanced knowledge in engineering, organization, arts, culture, trade and military strength- a strength that fortified our kingdom for generations.  
Our heritage is profound.

**This is who we are...**  
A people of immense creativity and indomitable will..”





## OUR PAST

Despite its rich heritage, Edo State has faced numerous challenges throughout its history- from the colonial period to several years of military rule.

A brutal military regime as well as frequent changes in government led to inconsistencies in development, resulting in significant setbacks for Edo state and its people.

These challenges, compounded by the complexities of a larger and often dysfunctional national framework, continue to impact Edo to this day.

## RETURN TO DEMOCRACY

The advent of democracy brought with it hope of redemption. Since 1999, successive governments have made concerted efforts to restore our glory as a people.

- **Governor Lucky Igbinedion** invested in reviving key economic assets and establishing various educational institutions that still exist across the state.
- **Governor Oserheimen Osunbor**, briefly in office, contributed his quota, particularly in the area of infrastructure.
- **Governor Adams Aliyu Oshiomhole** focused on improving infrastructure across Edo, including the construction and rehabilitation of several roads. His policy focus also saw him lay the foundation for the expansion of Edo State's economy. In education, his "Red Roof Revolution" improved the quality of education infrastructure. His legacies set the scene for a modern and economically vibrant state.

## WHERE WE ARE

**Governor Godwin Obaseki** consolidated the Oshiomole reforms and has completely transformed many aspects of Edo state. While Oshiomole focused on educational infrastructure Governor Obaseki focused on the content and quality of education, completely overhauling the learning experience for school children and their teachers across Edo State. Obaseki's Edo Basic Education Sector Transformation (EdoBEST) programme has revamped the education sector, particularly at the primary and secondary school levels. These initiatives have resulted in Edo consistently ranking second and third place for basic education in Nigeria (up from 28th in Nigeria a few years ago).

The healthcare sector has also seen significant improvements, with the fully equipped Primary Healthcare Centers, the reconstruction and accreditation of the Edo School of Nursing, Science and Midwifery, telemedicine partnerships with the Diaspora, and the launch of the Edo State Health Insurance Scheme. These initiatives have greatly enhanced access to affordable healthcare for many previously excluded residents.

## The Economy

The state's economy has been revitalized with significant investments in power, fibre optic broadband, security, education, healthcare, public transportation, and regulatory reforms. These efforts have created the enabling environment for new investments and small businesses. Notable projects include a \$29 million ethanol plant, over \$100 million in the Edo State Oil Palm Program (ESOPP), two new modular refineries, the Ossiomo Power Plant, and six retail outlets (up from just two in 2016). These initiatives have generated jobs, boosted economic activities, and raised internally generated revenue (IGR) by over 140% in eight years, despite challenging macroeconomic conditions.

## A Transformed Civil Service

Furthermore, the transformation of Edo's civil service with a massive overhaul of infrastructure, continuous capacity building, and improved welfare (including payment of the highest minimum wage and 13th month- a first of its kind in Nigeria) means Edo state's civil service ranks among the best in Nigeria. While many states struggle to pay a basic wage for its people, the Godwin Obaseki administration announced a third salary increase in 6 years, raising the minimum wage to 70,000 naira, the highest in Nigeria today.

Additionally, the state has fully automated its operations to enhance service efficiency and transparency through its eGov platform.

## The Edo State Master Plan

Perhaps the greatest legacy of the Obaseki administration is the articulation of a robust plan of action for the development of Edo state and its three administrative zones. This manifesto has been developed in alignment with the state's 30- year development plan. Our goal is to build on the good that exists while improving deficit areas with the ultimate objective of making Edo State the most resourceful, balanced, connected, smart, resilient and sustainable state in Nigeria, where every citizen is empowered with opportunities to live life in its fullest.



## FORGING AHEAD

Undoubtedly, significant progress has been made over the past eight years. However, much work remains to solidify these reforms and advance our journey towards the inherent greatness within us, ultimately restoring our state's prosperity.

We forge ahead knowing that the same blood flowing in the veins of those who built and sustained this great civilization runs in our veins today. This continuity of strength, resilience, and ingenuity are our driving force as we seek leadership that will propel our state to new heights of progress and prosperity.

Given the enormous social and macro-economic challenges we face in Nigeria today, we cannot afford to gamble with our collective future and the destiny of our children by electing leadership that is incapable of addressing these issues with competence and vision.

Edo needs a leader with the capacity, global networks, and proven track record to unlock the rich potential of our people and transform their latent talents into valuable assets.

Asue Ighodalo embodies these qualities, offering the visionary and innovative leadership required to navigate these challenging times and propel Edo State towards a future of sustained prosperity and growth.

**This manifesto lays out a detailed plan of action to achieve a prosperous future that honours our rich heritage and actualises our full potential.**



## 1. WELLBEING

Ensuring the wellbeing, health and happiness of all our people.

Hardship Relief. Good Jobs. Good Roads. Electricity. Affordable Healthcare. Good Quality Education. Potable Water. Women & Youth Empowerment.



## 2. ECONOMIC GROWTH

Leveraging our competitive advantages to grow our economy and create wealth.

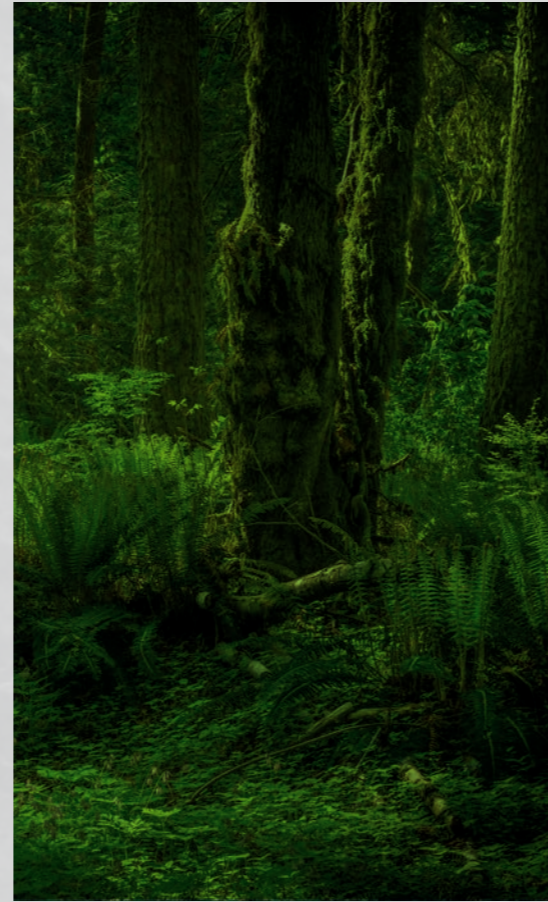
Increased Agricultural Production. Jobs. Made-In-Edo Products. Culture & Tourism. A Buoyant Creative Industry (Movies, Music, Arts). Mining. Small Businesses.



## 3. OUR ENVIRONMENT

Protecting our environment and our future.

Growing Sustainably. Erosion & Flooding Control. Reforestation. Green Spaces. Renewable Energy. Green Micro-Grids. Resilient Cities. Protecting Our Future.



## 4. GOOD GOVERNANCE

Delivering quality public services while ensuring transparency and accountability.

A Motivated Workforce. Listening to the People. Fiscal Responsibility. Being Accountable. Consolidating E-Governance. Inclusive Government. Transparency.



## 5. SECURITY, LAW, ORDER

Ensuring security, law and order as the foundation of our prosperity.

Supporting the Police. Adopting Technology. Community Engagement. Rule of Law. Restoring Our Values. Social Stability. Community Trust.



# THE FUTURE WE SEE

I see a pathway to prosperity for our people and our state.

I see a path to lifting the highest number of people into prosperity by implementing the most comprehensive social welfare program ever witnessed in south-south Nigeria.

I see a path to making Edo State the safest state to live and work, a place where everyone has access to quality, affordable healthcare.

I see a path to educating primary and secondary school children and preparing them for the world of work so that they become assets that employers of labour from all around the world will compete to employ.

I see a path to funding and building the road networks, electricity and other commercial infrastructure that will open up our state, create jobs at scale for our teeming youth and support the transition of our state economy to a first-world economy.

I also see a path to uniting Edo, ensuring that all of us, brothers and sisters, put our differences aside and work hand in hand to build the most progressive, prosperous state in Nigeria.

**I see a path where the regeneration of Nigeria will begin right here in Edo, the heartbeat of this nation”.**

*Asuerinme Ighodalo*



## 1. WELLBEING OF ALL OUR PEOPLE

- Achieve less than 10% Poverty across the state
- Food banks to support our poorest and most vulnerable
- Good roads, potable water and electricity across the state
- The best schools in Nigeria
- Every child above 15 years will learn a skill
- Provide affordable medical services to the most vulnerable
- A destination for health tourism
- Job Schools to Train our Unemployed
- The best Vocational and Trade Schools
- Affordable Public Transportation (CNG-powered)
- Market places where our women trade without hassles, harassment and multiple taxation issues.

## 2. GROWING OUR ECONOMY

- Food basket of South-South Nigeria & Agriculture Estates
- Large properly designed Production Parks in the 3 Senatorial Areas
- Exporting Made-In-Edo products, talents & services
- Planned & organized infrastructure for industrial production
- No. 1 Tourist Destination in West Africa
- Technology Parks in 3 Senatorial Districts
- Power plants In Edo North & Central
- Benin River Port
- Creative Clusters across the state
- Affordable Public Transportation (CNG-powered)
- Logistics & Distribution Centres
- Mining-to-Product Clusters

## 3. OUR ENVIRONMENT

- A clean, healthy environment
- Green and eco-friendly building projects (to meet net carbon zero)
- A well articulated strategy to achieve net zero carbon
- Eco-tourism Resorts
- Affordable Public Transportation (CNG-powered)
- Sustainable agriculture that minimize chemical use
- Transition to Renewable Energy
- Green Micro-Grids

## 4. GOOD GOVERNANCE

- A Civil/Public Service that is a first choice for Top Talents.
- Significant increase in State's IGR which should surpass Federal allocation.
- Strong, resilient institutions that support our quest for socio-economic prosperity
- The most open, accountable, transparent and accountable government in Nigeria
- Edo Diaspora Commission that connects our brothers and sisters in the diaspora with the development occurring in Edo State.

## 5. SECURITY, LAW & ORDER

- Full State & Local Government Policing
- The safest and most secure state in Nigeria
- World Class Emergency Response Centres along major arterial highways and across the three senatorial districts
- The most motivated security operatives in Nigeria
- A thriving, buoyant night economy.

# MY COMMITMENT TO YOU



## Our Elderly

We will continue to honour and respect your lifetime of contributions to our state. We commit to ensuring that you live your later years with dignity, supported by accessible healthcare, social services (including free public transportation), and community programs tailored to your needs.

## Our Women

We will champion your rights, respect your voices, and ensure your equal participation in all aspects of society. We commit to creating policies that safeguard your health, advance your education, and promote your economic well-being.

## Our Youths & Students

You are the leaders of **TODAY**, not the future. We will actively support and invest in your potential. We commit to enhancing educational opportunities, paying a bursary to qualifying students, expanding job training programs, and fostering an environment where your innovative ideas and entrepreneurial spirit can thrive.

## Our Children

We will nurture, protect, and invest in your growth and development. We commit to providing a safe, healthy and supportive environment that allows each of you to learn, play, and explore your potentials.

## Our Special Needs Family

We will advocate for your rights and work tirelessly to ensure your full inclusion in every aspect of society. We commit to removing barriers that hinder your participation, whether they be physical, social, or systemic.

## Our Farmers

We will recognise and uphold your vital role in feeding our state and sustaining our economy. We commit to providing you with the support needed to thrive—be it through improved security, access to modern farming techniques, sustainable practices, or fair marketplaces where you can sell your products at a worthy price.

## Our Diaspora

We will strengthen our ties and foster a deep, inclusive connection with you, no matter where you are in the world. We commit to creating platforms that enable your active participation in Edo's development, recognizing the invaluable skills, perspectives, and investments you bring.

## Our Religious Leaders

We will respect and uphold your crucial role in nurturing the spiritual and moral well-being of our state. We commit to engaging with you in meaningful dialogue and partnerships that foster peace, tolerance, and mutual understanding among all faiths.

## Our Traditional Rulers

We will honour your esteemed roles as custodians of our cultural heritage and pivotal leaders within our communities. We commit to fostering a collaborative relationship where your wisdom and experience are integral to the security, governance and development of our dear state.

## Our Civil & Public Servants

We will continue to recognise and value your dedication and the pivotal role you play in the machinery of governance. We commit to providing a supportive work environment that enables professional growth and efficiency. We will continue to ensure fair compensation, continuous training, and career advancement opportunities.

## Our Professors & Teachers

We will honour and support your critical role in shaping the minds of our future generations. We commit to fostering an environment that values education and provides the resources necessary for you to excel in your vital work. We will continue to invest in your professional development and ensure that your compensation reflects the importance of your contributions.

## Our Healthcare Workers

We will continue to prioritise your well-being and advocate for conditions that respect and reflect the critical work you do. We commit to investing in your professional development, improving healthcare facilities, and ensuring that you have access to the latest technology and equipment

## Unemployed Youths

We will actively address the challenges you face in securing meaningful employment. We commit to creating and expanding job opportunities through economic development initiatives that target various sectors, from agriculture to the creative industries. We will enhance training programs that equip you with the skills necessary for today's job market.

## Our Rural Community

We will acknowledge and address your unique needs and challenges. We commit to working hard to improve the quality of rural infrastructure, such as roads, healthcare, and social services, to enhance your quality of life and ensure equal access to essential services.

## Our Transport Workers

We will acknowledge and enhance your critical role in keeping our state connected and our economy moving. We commit to improving the conditions under which you work by ensuring safe, modern, and well-maintained public transportation infrastructure.

## Our Unions & Associations

We will respect and value your role as vital representatives of the workforce and various professional sectors. We commit to engaging in open and constructive dialogue with you to ensure that the voices and concerns of your members are heard and addressed in policy-making.

## Our Media

We will continue to uphold and protect your essential role in fostering an informed and engaged public. We commit to ensuring transparency and access to information, enabling you to report freely and accurately on matters of public interest.

## Our Politicians

We will listen, be open, accessible and inclusive. We will respect the political order and enable the development of our party across all levels across the state. We commit to engaging in fair and constructive political discourse that prioritizes the welfare and progress of our state above all else.

## NGO's, CBO's & Civil Society

We will recognise and support your indispensable roles as watchdogs, advocates, and service providers within our state. We commit to fostering an environment of collaboration and mutual respect, where your expertise and connections can influence and enhance public policy and community development.

## Formal Businesses

We will cultivate an environment that supports your growth and sustainability. We commit to developing policies that enhance economic stability, provide incentives, and streamline regulatory processes to make Edo State the easiest state to do business in.

## Informal Businesses

We will provide a supportive environment that enhances your ability to operate efficiently and securely. Our goal is to create an inclusive economic environment where every business—large or small, contributes to and benefits from Edo state's growth and development.

## Investors

We will create a welcoming and stable environment conducive to business and economic growth. We commit to maintaining a transparent regulatory framework that ensures clarity, fairness, and efficiency in all business dealings.

## Our LGA Leaders & Workers

We will continue to foster a culture of collaboration and respect, recognising the critical role you play in directly impacting the lives of our people at the grassroots level.

## Entertainment Community

We will nurture your creative talents as essential contributors to our cultural vitality and economic diversity. We commit to supporting the arts and entertainment sectors through policies that facilitate creative expression, expand audience access, and foster both local and international collaborations.



# WELLBEING OF ALL OUR PEOPLE

# 1

Quality of Life. Getting a Good Education. Enjoying Good Health. Living in a Respectable Home. Clean Environments. Water in Your Taps. Having Security. Feeling Valued. Healthy Families. Feeling Safe. Having a Good Job. Earning a Good Income that Supports Everyday Needs. Reduced Hardships. Bonding with Family and Friends. Being Happy.

# 1. WELLBEING OF ALL OUR PEOPLE

The current state of the Nigerian economy has put pressure on the average citizen with the attendant feeling of helplessness, economic hardship and harsh living conditions.

We will focus on improving the lives of our people by delivering high quality essential services including education, potable water, healthcare, sanitation, and food security. We will also ensure adequate support for those who need help in the short term.

## Our Goal

The **Well-Being Of Our People** is the most important touch point in our mission to serve Edo people. Our goal is to elevate our people above the aspirations of the United Nations Sustainable Development Goals (SDGs) for poverty, hunger, health, well-being, education, gender equality and water (SDGs 1 to 6) by year 2030.



## Achieving Our Goals



Whilst we work hard to deploy policy and other interventions that will protect Edo people from national shocks, we acknowledge the need for immediate intervention in the lives of many people living and working in Edo.

Luckily, through the work of the Obaseki administration, Edo state has built a comprehensive database of its people, including the impoverished and vulnerable.

Consequently, we will immediately establish short-term social relief and safety net programmes, that will alleviate the hardship of our people so that they can meet their most pressing needs.

We will also establish programmes to accelerate our people's ability to find jobs and other means of livelihood to sustainably support themselves as quickly as possible.

We will relieve Immediate hardship through Targeted Welfare Intervention Programs, including providing:

- **Targeted conditional grants** of N20,000 for 50,000 people for three months to our most vulnerable and disadvantaged citizens (special needs, widows, poorest of the poor etc).
- **Conditional monetary interventions** for our workers in the informal sector, including artisans, traders, food vendors, etc.
- **Food Relief & Security Program** to relieve the pressure of escalating food prices we will aggregate identified staple foods, focusing on local producers of food crops to encourage local farmers and we will fund the initial pricing interventions
- We will immediately roll out our food crop value chain development initiatives through our Tuber Programme (Yams, Cassava, Coco yam and Sweet Potatoes), Grains Programme (Rice, Beans and Maize) and Greens Programme (Vegetables, spices and Fruits).

We will implement **Targeted Welfare Intervention Programs** for specific identified groups including:

- **The Elderly:** Our social safety net will provide access to free medical services and transportation for our senior citizens above 70 years.
- **Special Needs:** Wheelchairs and prosthetics for the physically challenged.
- **Market Women:** Micro-financing to market women so that they are able to sustain themselves, and enhance the livelihoods of their families and communities.

## EDUCATION

Education is at the core of human development, with the potential to elevate people and families from poverty to prosperity within a generation.

Building on the progress that has already been made, we will ensure that every child in Edo is given the opportunity to access to high quality, affordable primary and secondary education, that will provide them with a good foundation, and also be relevant for the kinds of jobs we need to achieve success in Edo, Nigeria, and the world. Specifically, we will:

- Reduce the out-of-school population by 50% annually from the first year of our government.
- Recruit, train, and retain more teachers, especially in the rural areas.
- Upgrade existing schools and provide new institutions that will enable our children and youths acquire the skills they need.
- Introduce incentives such as housing through the Essential Workers' Long Service Award Scheme providing retirement homes to school teachers who have spent a significant number of years in rural service postings.
- Pay a bursary to students at university level.
- Adopt international standards for learning outcomes in our public schools so that, beyond basic literacy, all our children can become globally competitive.
- Launch an Adopt-A-School Initiative to incentivise corporate and non- corporate partners to adopt schools in communities and work with the Ministry of Education to ensure they meet required standards.
- Pay special attention to children with physical challenges and special learning needs, to improve access to quality education for all our children irrespective of socioeconomic status or physical ability.

## HEALTHCARE

We will ensure that residents of Edo have the highest life expectancy in Nigeria, by providing access to quality and affordable healthcare services. Specifically, we will:

- Expand access to affordable health care, especially for workers in the informal sector, market women, traders and transportation operators, through enrolment in the Edo Health Insurance Scheme (EdoHIS).
- Provide nutrition supplementation packages for nursing mothers in their first 6 months after childbirth.
- Establish a Fund to improve the wages and welfare of doctors and nurses, especially those serving in rural areas.
- Include health workers in the Essential Workers' Long Service Award Scheme, providing retirement homes to health workers who have spent a significant number of years in rural service postings.
- Establish Community Based Primary Healthcare quality control and feedback mechanism leveraging technology.
- Create a Primary Health Care (PHC) Certificate Program to enable accelerated training in the delivery of primary healthcare interventions and help address PHC staffing challenges.
- Augment our primary health care facilities throughout the state with the deployment of mobile primary health clinics, staffed to address the disease load in each LGA.
- Partner with Edo doctors and health workers in diaspora to equip and provide supplementary specialist staffing for our tertiary and specialist hospitals.
- Encourage private sector participation in the provision of mobile clinics and the rehabilitation of critical healthcare infrastructure, especially in rural areas.
- Provide free healthcare services to our elderly (aged 70 years plus).

 **POTABLE WATER**

The current and immediate past governments, in collaboration with the development agencies including the European Union, undertook studies on ground and surface water quality in parts of the state. We will utilize these studies to form the baseline for our potable water programme. Specifically, we will:

- Provide access to a minimum of 120 litres of water from improved drinking water sources to 80% of our population by 2034 in pursuit of the World Health Organisation (WHO) requirements.
- Update existing feasibility studies on all sources of improved drinking water including the dams and weirs across the state and consolidate these assets under the Edo State Potable Water Development Program
- Provide access to potable water for over 500 communities across Edo State through:
  - Rehabilitation of dams at Ikpoba and Ojirami.
  - Rehabilitation of the weirs at Ewohimi, Ugbalo and Jattu.
  - Extension and reticulation of supply from Ugboha Water Scheme.
  - Rehabilitation of existing reservoirs.
  - Construction of water treatment plants and pumping stations.

 **FOOD SECURITY**

We will take urgent steps to address escalating food prices, and ensure that our people are food-secure, through:

- Initial price interventions on foodstuff by aggregating identified staple foods (particularly from our local producers of food crops) to relieve the pressure of escalating food prices.
- Investments in Food Loss and Waste (FLoW) solutions to reduce post-harvest food losses.
- Distribution of high yield seed varieties for short-gestation crops like yam, cassava, plantain, maize, soya beans, and vegetables to enhance local smallholder production.
- Gender-based cooperative farming to empower our women in agriculture especially in our rural communities.

 **SANITATION**

We will ensure that our public spaces are clean, sanitary, and supportive of the well being of Edo residents. We will:

- Launch a public sanitation campaign to create awareness about unhealthy practices and the importance of sanitation.
- Ensure that adequate waste management services are available in every local government area, and support the emergence of community recycling and waste-to-wealth initiatives.
- Impose a state-wide ban on the construction of roads without drainage and correct existing gaps.
- Enlist the support of our corporate citizens to implement public toilets across the state.

 **HOUSING**

Key to our agenda for housing is attracting infrastructure funds for residential housing development and home ownership schemes for both domestic and diaspora Edo people. We will:

- Support the Edo State Development and Property Corporation (ESDPC) to provide Rent-to-Own Housing Schemes to enable more people to own their homes in different parts of the state (public servants, low-income earners and the informal sector workers)
- Focus on affordable housing development by attracting manufacturers of building materials to our industrial park (sanitary facilities, tiles, doors, roofing, window profiles, etc) to derive cost benefits based on negotiated volume discount and reduced logistic costs.
- Provide easier access to land with title for the development of smart cities and other property development.



# GROWING OUR ECONOMY

## 2

Leveraging our Competitive Strengths.  
Raising Productivity. Improving Performance.  
Democratising Opportunity. Creating Jobs.  
Entrepreneurship. Exporting Food & Talent.  
A Connected Diaspora. Global Connections.  
Finding New Markets. Releasing Potential.  
Exploiting Opportunities. Learning New Skills.  
Innovation. Attracting the Best. Agro-Industrial  
Base of Southern Nigeria. Destination Edo.



## 2. GROWING OUR ECONOMY

### PROSPERITY FOR ALL

To truly serve its purpose, economic growth must translate into the progress and prosperity of the people who make up the economy.

Edo has huge potential and is endowed with an abundance of natural resources and advantages that can continue to power its economic transformation.

Our unique location, rich agricultural lands, biodiversity, gas reserves, mineral resources, rich culture and youthful population are essential assets that, when effectively harnessed, can drive sustainable development and prosperity for our state and all our people.

Our immediate priority is to get our unemployed people engaged in sustainable economic activities through various programs to make living and working in Edo rewarding through increased productivity.

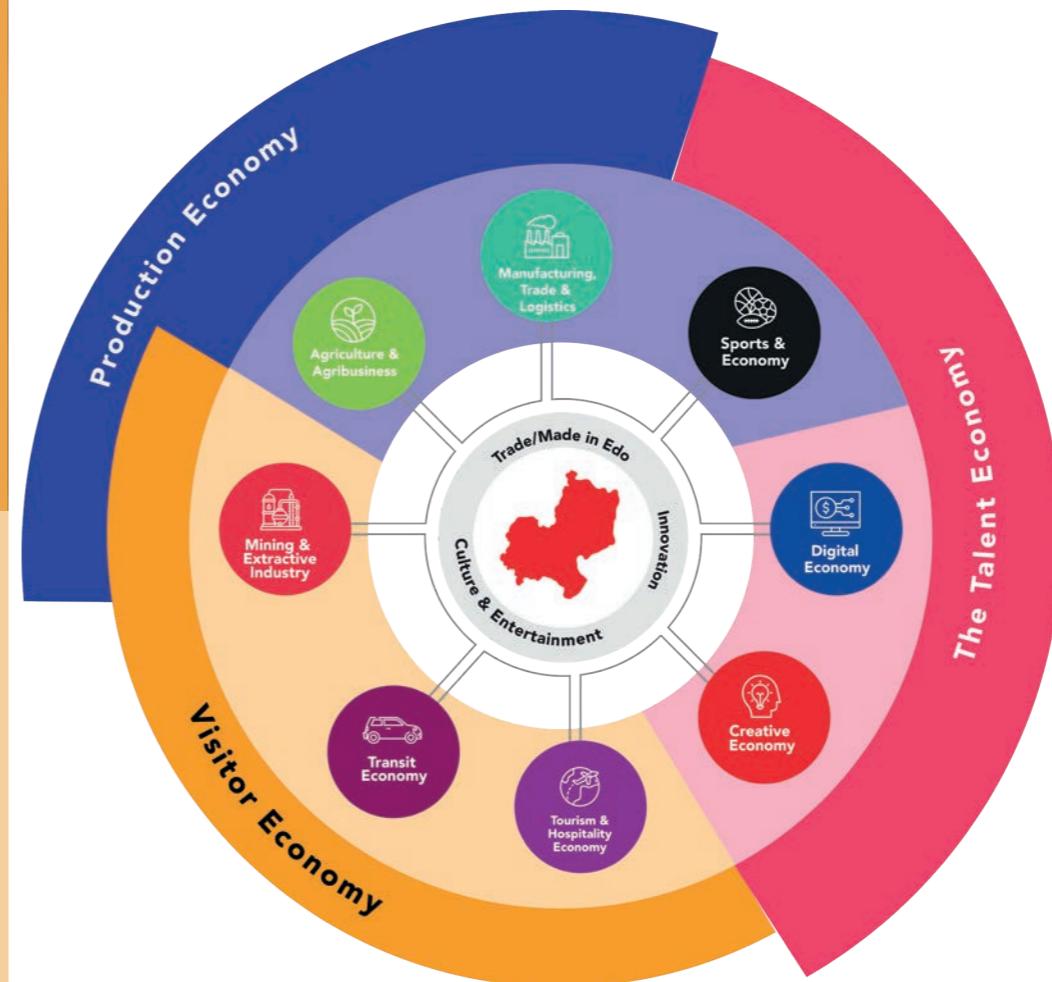
### Our Goal

Our goal is to create **jobs**, lift our people into inclusive prosperity and position Edo State among the Top-3 economies in Nigeria by year 2030.



### Growing Our Economy

#### THE KEY SECTORS THAT WILL DRIVE OUR ECONOMY



### ENSURING INCLUSIVE ECONOMIC GROWTH: 3 ECONOMIC AGENCIES

We will ensure that no part of the state is left behind by creating a Zonal Economic Development Agency in each senatorial district in the state (Edo Central, Edo North and Edo South).

These Agencies will champion the development of the economies of their respective regions and ensure that the prosperity we will create together will truly transform the whole state, not just some areas.

The mandate of the Agencies will be to engage the youth, women, small businesses, and other stakeholders in their respective economic zones, and deliver access to and participation in our economic agenda. They will ensure that there is equitable distribution of opportunity throughout their specific senatorial districts, and be accountable for escalating and ensuring the resolution of economic growth impediments in the zones.

To grow our economy, we will focus on three key areas that have the highest capacity to create jobs for our people:

- **Production:** Increasing agricultural output and production while also leveraging our natural resources (mining and the extractive industry).
- **Talent:** Creating the opportunity for our youths to harness their innate talents through the arts, entertainment, technology and sports.
- **Visitors/ Tourists:** Attracting tourists and visitors to Edo in order to enjoy our unique offerings.

Our choice of these 3 key focus areas and plans for developing them, are based on our comparative advantages as a state, the need for disciplined investment, and an organised approach to actualising our economic potential.

We have especially taken into account the market potential of these focus areas to unlock prosperity for more of our people, the interests of our young people who make up the majority of our working population, and the need to empower our women – who make up half of that number.

For each of the identified areas, we will build integrated value chains, and lead the charge in identifying lucrative (where possible, international) end- markets for goods and services produced in Edo State under our 'Made In Edo' Programme.

We will support our people to upgrade their skills and attain the quality standards that will secure Edo's place as a producer of choice for domestic and international markets.

## THE PRODUCT ECONOMY

At the core of our economic agenda is the drive to make Edo a net producer of goods and services, moving away— as quickly as possible - from the consumer economy that has crippled the national economy, and left our people poor and unemployed.

Significant progress has been made by the current administration in building cluster facilities to aggregate economic activity. We must now bring those facilities to life, by connecting them with the people, by building inclusive value chains and road networks that will ensure that the benefits are felt throughout the state.

In implementing our growth plans, we will focus first on productive sub-sectors that can deliver immediate impact at scale - like agriculture – and then build up to sectors that utilize other natural resources – such as our solid minerals - as a foundation for industrial growth.

These plans require substantial financial investment, and a secure host state, which underscores the need for all Edo people to work together to transform our state.

## AGRICULTURE & AGRO-INDUSTRIAL SECTOR

We will unlock our agricultural potential, first by feeding ourselves and others, then by producing goods for manufacturing and export markets. To boost earnings and raise the living standards of our people throughout the value chain, we will ensure:

- Access to land and finance for shorter gestation food crops (such as yam, cassava, plantain, maize, legumes, rice, fruits, and vegetables) to ensure urgent traction.
- Robust and widespread extension services for our farming cooperatives, working with our farmers to maximise their yield by enabling soil testing, high-yield climate resistant input selection, and adoption of best practices.
- Significant investment in reducing post-harvest losses with improved storage, transportation and processing facilities.
- Strategic projects such as dams, water reservoirs, and expansive irrigation systems that can support year-round agricultural activities.
- Optimisation of our existing food belts and organising our smallholder farmers into crop enterprise zones (e.g. cashew processing in the Agbede-Okpella corridor, fruit processing facilities in Ehor, and modular rice mills to process paddy from our rice belts situated in Ilushi and Ekpoma).
- Expansion of the laudable achievements of the Obaseki administration with the Roundtable on Sustainable Palm Oil (RSPO) Programme by training and supporting smallholder farmers to attain relevant international certification in sustainable cash crop production to earn higher prices in the international market.
- Attraction of investment for commercial scale farming operations and agricultural estates that will include housing, schools, primary health care facilities, and new farming technologies to raise the living standards of our farming population and attract young people back to agriculture.
- Pathways to lucrative global industries (e.g. cosmetics, textiles/fashion, tyre manufacturing, alternative proteins etc) where our products can be sold as core inputs, and ultimately attract investment for full-value-chain agro-industrial expansion.

## Growing Our Economy: Increasing Productivity

### MINING-BASED PRODUCTS

Edo has significant proven deposits of clay, granite, laterite, bitumen, feldspar, iron ore, dolomite, gypsum, phosphate, lithium, gold, and gemstones.

We will unlock the multiplier effect of mining- based opportunities to build new industries and create jobs and wealth for our people.

We will prioritise full value chain investments, ensuring that jobs and expertise are developed here in Edo, and commit investors to mining methods that minimise environmental damage.

We will pay particular attention to the following high-value opportunities:

- Lithium extraction and the setup of EV battery production facilities for international export.
- Supply chain development around the construction and sustainable building materials sectors, taking advantage of our laterite, dolomite, feldspar deposits.
- Artisanal micro-production clusters for our youth to showcase their creative potential, in gemstone/ jewellery production, enabling investment, aggregation, scaling up and efficient access to markets.

### LEVERAGING OUR GAS RESOURCES

Edo has the largest onshore gas deposits in Nigeria.

This natural advantage will be leveraged to fuel our industrial development in the state, on a less environmentally destructive fuel source.

We will specifically target investments that will leverage gas to fuel the Production Economy of the state. We will encourage:

- Gas-to-Power plants that will enable us to fully and reliably power the state.
- Gas pipeline investments that will enable the distribution of gas to production facilities across the state.
- Compressed natural gas initiatives that will build on the current administration's efforts to reduce the cost of transportation by accelerating the use of CNG vehicles for public transportation.

### BENIN ENTERPRISE PARK

The Benin Enterprise Park is a mixed used enterprise park, combining industrial, commercial and residential zones in 997 hectares (almost 10 sq. km) of well situated real estate.

The park is designed to attract world class industries that are keen to be at the logistical centre of Africa's biggest and most vibrant economy. We will:

- Accelerate the development of the Park and incorporate production and processing plants within it.
- Secure the Free Trade Zone License for the Park by 2025.
- Make initial investments in horizontal infrastructure, electricity and water to make the park more attractive to site industries and process plants.
- Attract investors into the Park through targeted policies that support investments.
- We will specifically target solid mineral processing, modular refineries and petrochemicals to take advantage of the natural deposits of hydrocarbon and solid minerals around the Park location.

## THE TALENT ECONOMY

Demographically, we are a youthful state. 39% of Edo people are between the ages of 18 and 40 and 90% of our population is literate, as compared with the national average of 69%. This represents a potentially huge human capital advantage.

In addition to having a population that can read and write, the creativity quotient of our young people is remarkable. It shows up in the arts, in technology, in sports, and even in finance. The potential, therefore, exists for our human capital to be made fit-for-purpose, and productively channelled by building an environment of capacity development and opportunity.

We will be deliberate in positioning Edo State as a talent hub – building on our young people’s movie production, music, software engineering and other skills.

We will attract investment into our creative and digital clusters, and accelerate talent development across the state.

### THE CREATIVE SECTOR

**Our objective is to harness and amplify the rich cultural and artistic potential of our youth, transforming it into a dynamic source of economic growth and job creation. As Nigeria’s creative capital, we will:**

- Strengthen the Victor Uwaifo Creative hub and establish similar facilities in Edo Central and Edo North to take the opportunities inherent in the creative industry nearer to the people especially students of the arts.
- Establish Edo State as the hub for movie production, music, animation, etc by offering concessions on state taxes and other incentives to users of our creative hubs.
- Invest in shared creative spaces, in Edo Central and Edo North, including technology, capacity building, and marketing services to empower our talented creatives with the tools and skills they need to succeed in the global marketplace.

## Growing Our Economy: Harnessing Our Creative Ingenuity

### THE SPORTS SECTOR

**Our objective is to cultivate a vibrant sports culture that nurtures local talent and attracts investment, tourism, and global sporting events to Edo. We will:**

- Resuscitate the Games Village in Afuze and return it to its lost glory.
- Significantly upgrade our Youth Centres, with contemporary amenities, and implement specific incentives to encourage CSR (Corporate Social Responsibility) investments in community sports development and promotion.
- Create competitive tournaments for identifying talent in our primary, secondary and tertiary institutions.
- Establish a Competitive Sports Academy in the state, to train our young people with identified talent, and support them with access to opportunities, pro bono contract negotiation services and representation – to prevent exploitation.
- Work with Edo’s in the diaspora, with successful sports careers, to create mentorship opportunities, and attract international attention and funding.

### THE DIGITAL SECTOR

**Our objective is to position Edo’s young population to become Africa’s technology leaders, empowering them with the necessary skills to participate in the economies of the future. We will:**

- Continue to invest in the Edo Tech Park and strengthen the institution to provide specialised training to our talented young people in applied science, technology, engineering, and mathematics (STEM) disciplines, and make them market-ready for the jobs of the future.
- Attract funding and international client organisations into our technology parks to accelerate business-process-outsourcing (BPO) opportunities that will allow our young people to participate in the global workforce without having to leave their home state.
- Continue the culture of Technology “pitch days” for our budding technology entrepreneurs to present their technology-based business ideas, attract seed funding and venture capital to develop their ideas into scalable tech ventures.
- Partner with high-achieving Edos in diaspora to create mentorship and specialised technology training opportunities for our young “techies”.

## THE VISITOR ECONOMY

Our locational advantage - being at the heart of Africa's most populous country - coupled with the privilege of having a legendarily rich cultural heritage, combine to make Edo the natural home of a thriving Visitor Economy.

The Visitor Economy clusters together visitors who pass through our state on their way to other places (transit visitors) with those who visit Edo as a destination, either for business or leisure (tourists); and builds services and experiences that encourage them to stay, spend their money in the state and return – thereby boosting our economy.

Together, this cluster of visitors, and the services they require can have a strong multiplier effect, accelerating other sectors including food, retail, trade and entertainment.

To maximise the potential of the Visitor Economy in Edo, we must make the state both secure and hospitable for our guests, offering a safe environment as well as accommodation and services that deliver value for money, a strong service culture and memorable experiences.

## Growing Our Economy: Leveraging Our Location



### THE TRANSIT SECTOR

**Our objective is to ensure that our transit visitors spend time in our state, patronise our local businesses, and buy /enjoy our "Made in Edo" products and services. We will:**

- Improve our road and transportation infrastructure to support the extension of business hours across the state to cater to the needs of visitors and transit passengers.
- Accelerate the development and upgrade of wholesale and retail markets, and food courts in close proximity to our major transit centres and arterial roads.
- Simplify regulatory procedures and reduce bureaucratic red tape to attract more investors and operators in the transit sector.
- Provide rest stops and motor parks along key transit routes across major arteries that connect Edo to our neighbouring states.
- Develop transit parks to boost the haulage and logistics potential complete with ancillary infrastructure and services



### THE TOURISM & HOSPITALITY SECTOR

**Our objective is to promote Edo State as a premier destination for cultural tourism and events, attracting visitors and investors from around the world. We will:**

- Work closely with the traditional institutions, local communities, and hospitality sector stakeholders to promote and enhance our various cultural sites and places of interest and showcase these sites to the world to attract domestic and international visitors to Edo State.
- Articulate a Major Events Strategy to intentionally attract sporting, business and entertainment events to Edo State.
- Engage regularly with our stakeholders to address concerns, challenges and limitations of our hospitality players, including hotels, restaurants and bars, travel companies, and our local police
- Support smaller players that may have the capacity to scale, by facilitating access to investors.
- Attract private investors for the development of world class conference centres, to meet the needs of the business travellers and conference organisers with the goal of making Edo State Nigeria's MICE Capital.
- Alongside improved security and transportation networks, support the establishment of at least one world class hotel in each senatorial district.



### TRADE: MADE IN EDO

The human and vehicular traffic flowing through Edo, whether in transit or for leisure and business tourism, creates a daily extended market for the goods and services we produce in the state.

This influx of people will expand our natural market size and ensure a steady turnover of customers, reducing the risk of glut or market saturation for Edo-based products and services. In this way, our buyer pool is continuously refreshed, providing ongoing opportunities for economic growth and stability.

## ENTERTAINMENT

In addition to cultural tourism and places of interest, the Visitor Economy will create a captive market for our young creatives, and gig opportunities in partnership with the hospitality sector.

We will work closely with our creative sector, and the Victor Uwaifo Centre, to create periodic international arts, theatre, comedy and film festivals to entertain our guests, showcase our culture, and ensure that we deliver memorable experiences that keep them coming back to Edo.

# PROSPERITY ENABLERS

## CREATING PROSPERITY FOR ALL

Creating prosperity for all, means making it easy for people to live, work and move around Edo. Our plan is to focus on building and improving the infrastructure that promotes the overall wellbeing of our people, while also investing in the requisite commercial infrastructure that supports each economic zone.

We will expand and repair existing infrastructure, keeping in mind that our geographical position in Nigeria brings high human and vehicular traffic through the state daily.

We will embrace the commerce and connectivity advantages that comes with that, and build for the additional pressure this puts on our infrastructure.

### Our Goal

Our mission is to invest (significantly) in improving and building the key infrastructure that will enable our state to become the fastest growing sub-national by year 2028 and among the top three states to live and work in Nigeria by year 2032.



## Creating Prosperity for All

### ROADS

Edo State has around 9,700 km of roads, with 862 km being Federal roads and about 8,838 km as State roads. Despite reconstructing over 1,000 km of roads since 2016, less than 40% of our roads are fully developed. To address this, we plan to:

- Take urgent remedial steps to make the existing roads motorable, and immediately arrest economic isolation in parts of the state.
- Establish an agency to conduct palliative works and improve existing roads on a continuous basis.
- Develop 2,000 Km of roads across the state within 4 years in office through multiple financing options including PPPs.
- Enforce the use of Environmental Impact Assessments for road construction to ensure that the designs are fit for purpose, meet the durability test and protect the environment.
- Ensure that road designs are comprehensive and cut across agencies of government that regulate the use of our roads to ensure output requirements meet all purposes (drainage, bus shelters, street-lights, walkways, road signages, etc).

### POWER

Without electricity, no real economic development can occur. Consequently, we will:

- Develop mini-IPPs to leverage hydro, solar, waste-to-power and other alternative sources in each geo-political zone to enhance the energy mix through Public-Private Partnerships (PPP) and Privately Financed Initiatives.
- Address rural electrification first via renewable energy and the development of community-owned micro-grids leveraging available green finance options and carbon credits.
- Extend commercial business hours through the supply of reliable electricity to businesses and streetlights across the state.
- Extend the existing EDSG Distribution Network to more areas for a more efficient electricity supply.

### TRANSPORTATION

We will develop a transport and logistics system that meets the needs of our growing population and supports our economic ambitions as a nodal state with a transit route for the North, East, West and South-South Nigeria. We will:

- Develop an integrated Transportation Master Plan to cater to human and goods transportation within the state and to destinations across Nigeria.
- Promote investments in transit and logistics services and establish our state as a regional hub for transport and logistics that will service crucial markets in the South-South, South-East, South West and Northern parts of Nigeria and other African cities.
- Facilitate the construction of truck stops, trailer parks and highway service areas at the entry points into the state and along intra-state highways themselves, and enhance the livelihoods of the families and communities.

# PROSPERITY ENABLERS



## MARKETS

Working with Local Governments, we will ensure that our market places are well-organized, and equipped with the necessary facilities to support both vendors and consumers effectively. We will support Local Governments to:

- Upgrade infrastructure where deficits exist.
- Improve sanitation and environmental conditions in our market places.
- Enhance security and safety in all our market places.



## HUMAN CAPITAL DEVELOPMENT

Our people are our most valuable asset and our greatest competitive advantage. In order to achieve prosperity for all, we will transform our teeming population into a formidable human capital base that can support our collective ambitions for the state. Specifically, we will:

- Invest heavily in all our institutions and universities, including resolving legacy problems.
- Establish affiliate research institutes to build the requisite expertise in areas that will support our economy.
- Accelerate Technical and Vocational Education and Training (TVET) to produce employable workers for our economy, and the jobs created in the development of our enabling infrastructure
- Create a Workforce Academy, in partnership with specialist organisations, to bridge the gaps between our graduates' workplace skills and international standards.
- Partner with private sector actors and NGOs on Scholarship & Stipend programs to ensure that female and indigent students, particularly, have equal access to higher education.



## SUPPORTING OUR WOMEN

Women and girls make up half of our population. It will not be possible for us to accomplish our hopes and dreams for Edo, if they are not empowered to meaningfully participate in the economy.

We will deliberately and systematically support the development and empowerment of our women. We will prioritise:

- Leadership by example, ensuring gender balance at all levels of leadership in the state.
- Partnerships with NGOs and DFIs to provide access to finance for women-owned small and medium scale businesses.
- Girl-child focused programs to encourage young girls and women to remain in school, and those with the acumen to pursue STEM careers.
- Partnership with relevant agencies, including law enforcement to eliminate rape, sexual assault, domestic and other forms of violence against women.

# THE BENIN PORT PROJECT



## A Game Changer

The Benin Port Project was conceived to make Edo a major import and export cargo route with the capacity to handle up to 300,000 Twenty-Foot Equivalent Units (TEUs). This strategic initiative will enhance economic growth and, more importantly, revive historic trade routes along the Benin and Osse Rivers, reconnecting Edo State with its rich commercial heritage.

With our strategic position in the heart of Nigeria, the Benin River Port has the potential to transform Edo into a major trade and commercial hub.

We will work with the Federal Government and our development partners to accelerate its completion with ancillary facilities to support the movement of goods and services.

On completion of the project:

- The port will catalyse our Transit/Tourism sectors, making Edo a bustling trade hub at the centre of the country.
- We will open up a gateway to global and intra-African trade opportunities, that will accelerate our Product Economy.
- In readiness for this growth explosion in the state, we will build 2,000km of roads in the next 4 years, and seek investments in logistics and other ancillary services.
- This project will significantly expand the economy of Edo State and provide access to tax revenue for improving the lives of Edo people.
- We estimate between 5,000 and 10,000 direct jobs, and more than 50,000 indirect jobs will be created.



# GOOD GOVERNANCE

# 3

Transparency. Listening to the People.  
Fiscal Responsibility. Inclusive Government.  
Accountability. Empowering Civil Servants.  
Strengthening Local Governments. Including  
Traditional Rulers. Participatory Governance.  
Feeling Pride. Resilient Institutions.  
Delivering for the People.



# 3. GOOD GOVERNANCE

## A RESPONSIVE, ACCOUNTABLE GOVERNMENT

Government requires strong and reliable institutions manned by a skilled and motivated workforce to deliver quality services to the people. No part of our agenda will be achievable without a keen focus on our institutions, investing in continuous training and development for public servants, and fostering a culture of transparency, accountability, and efficiency.

Significant institutional reforms have been undertaken by the Obaseki Administration, with the result being a highly motivated, technology driven workforce.

Our focus will be on consolidating these achievements and leveraging the transformation as a springboard for unmatched people-centred governance.

### Our Goal

Our goal is to be the most effective, efficient, accountable and transparent sub-national government to work in not just in Nigeria but in West Africa by 2028.



## Good Governance



We will govern with openness, accountability and transparency to build trust between government and the people. This means:

- Financial accountability, with budget spending and contract transparency.
- Regular Citizen's Q&A Forum with state ministries and parastatals on key government projects and plans.
- Assurance of competent and experienced political appointees, and publication of their qualifications and credentials.
- Regular consultation with our traditional rulers and community leaders on matters relating to the growth and development of the state.
- Periodic Governor's Town Hall meetings in each of the 3 senatorial districts, rotating through local governments, in an open forum that ensures the people can directly raise their concerns and challenges with the governor and seek resolution.
- Publication of periodic reports on issues raised at town hall meetings and their resolution.



We will ensure that the Edo State public service is consistently the most fulfilling public service to work in Nigeria. This means:

- Continued payment of reviewed minimum wages and periodic reviews where practical to reflect changing socio-economic dynamics.
- Consolidating E-Gov to improve transparency and efficiency.
- Employing the best students from our universities into the public service and offering them incentives to participate in the development of our state.
- Merit based promotions and appointments, ensuring the most capable people are appointed to drive strategic initiatives.
- Strengthening the John Odigie Oyegun Public Service Academy (JOOPSA) to continue to build capacity of our workforce.
- Introduction of a supplemental Impact & Outcome-Based Additional Reward System to ensure that high-performing public servants are recognised and financially rewarded for exceptional results – in addition to their standard remuneration.



We will establish an advisory council comprising ordinary citizens to provide valuable insights and feedback on government policies and initiatives.

- **The Diaspora Commission:** We will actively involve our diaspora in governance by establishing a dedicated diaspora engagement office that facilitates communication, collaboration, and direct involvement in developmental projects. This office will serve as a bridge between our government and Edo State citizens living abroad, ensuring that their insights and investments are effectively integrated into our growth plans. We will also create platforms for regular dialogue through online forums, town hall meetings, and consultative events, enabling the diaspora to contribute their expertise and resources to policy-making and strategic initiatives.



# SECURITY LAW & ORDER

# 4

Security of Lives & Property. Law. Order. Feeling Safe. Having Security. Secure Homes & Communities. Social Stability. Absence of violence. Presence of Justice. Rule of Law. Community Trust. Collaborative Intelligence Gathering. Peace.

# 4. SECURITY, LAW & ORDER

Security is a major concern across Nigeria today. The country's complex security architecture means that sub-nationals are unable to holistically manage the security of people within their states.

However, in Edo State, the security profile has improved as a result of the revamped security architecture of the current government involving the security agencies and the Edo State vigilante network.

We will build on these efforts to eliminate violent crimes, including kidnapping, cultism and the growing scourge of bandits in our forests and on our farmlands, so that our people can return to their farms and we can return Edo to the days when we produced enough food for ourselves and others.

Our goal is to become the most secure state to live in and do business in Nigeria.

## SUPPORTING THE SECURITY AGENCIES

We will continue to actively support our security agencies to ensure they provide responsive and effective policing that serves the best interests of our people. This means giving them the resources, training, and tools they need to do their job well. We will:

- Resuscitate the Edo State Security Trust Fund to provide a sustainable solution to funding security equipment, manpower and infrastructure across the state.
- Work closely with the police to improve safety in our communities, build trust with the public, and ensure that the rights of all citizens are respected.
- Provide funding support to police personnel in Edo State for further training, equipment and accommodation.
- Recognition of outstanding police officers and other law enforcement tiers in the State.

## ADOPTION OF TECHNOLOGY

The use of technology will allow us to improve overall security, and expand our capabilities beyond the limitations of human coverage. We will adopt modern technology to enhance our security capabilities, by ensuring:

- Investments in drone technologies for surveillance
- Solar-powered lights to increase night-time lighting on our roadways, and security cameras at strategic locations to improve road safety across the State.
- Improvement of cell phone coverage across our road networks by working with the telcos.
- USSD and other phone-based emergency service hotlines to ensure help can be reached in the absence of data.

## COMMUNITY ENGAGEMENT

Keeping our communities safe is a job for everyone, not just the security forces. We will work together with our local governments, traditional rulers, and community leaders to create a strong network for security. This means:

- Establishing systems for collection and sharing of intelligence at a grassroots level.
- Community policing programmes to involve our youth, particularly, in efforts to secure their communities.
- Collaborating with our neighbouring states to improve the security architecture of the region.

## Security, Law & Order

### SUPPLEMENTARY SECURITY FORCES

We will strengthen our local security network by working closely with community vigilante groups and neighbourhood watch programs. We will also provide more training and contemporary security equipment to these local security teams to ensure they can effectively support the police. Additionally, we will:

- Recruit more personnel to bridge the gap between global standards & the current realities for effective crime prevention, detection and response.
- Improve and extend the existing local security architecture (including Edo State Security Network, PUWOF, the Command- and-Control Centre, and Community Policing) across the State.
- Create a well-trained and specialised Farmland & Forestry Security Unit to protect our farmers' lives and livelihoods, and ensure that our forests are uninhabitable for kidnappers, bandits and other criminals.
- Develop fully equipped Emergency Response Centres (ERCs) around entry and exit points into the state on the major arterial roads and sufficiently resource their operations.

### LAW AND ORDER

When crimes are committed, our judicial and corrections systems have a critical role to play in delivering justice, as well as in deterring and rehabilitating offenders. We will strengthen our criminal justice system to ensure:

- Zero-tolerance sentencing for repeat violent offenders through appropriate legislation.
- Accelerated prosecution of violent and gender-based crimes, while ensuring fair hearing, to deliver timely justice for victims.
- Counselling, faith, educational and skills-training programmes to ensure that offenders can begin their rehabilitation as they prepare to re-enter society.
- Intelligence based systems that keep track of high-risk offenders on release. Publication of quarterly report on issues raised at town hall meetings and their resolution.

### RESTORING OUR SOCIAL VALUES

While it is important to police and address insecurity, a key area of crime prevention that we will focus on is the restoration of our Edo values, our collective sense of right and wrong, and our love for ourselves and each other. To achieve this, we will work with all stakeholders to restore our values by embarking on:

- A values campaign to counter the growing scourge of cultism, drug use, thuggery and violence in our State, and address the factors that are luring our youth toward these vices.
- An accelerated process to engage our young people in immediate areas of high need: teaching, healthcare, our expanded security forces, civil work projects, entrepreneurship, sports, etc.
- Civic education to our classrooms to build a new generation of Edo people with a strong sense of identity, rights, and citizenship responsibility.

# ENVIRONMENTAL SUSTAINABILITY

5

Clean, Safe Environments. Protecting Our Forests. Basic Sanitation. Green Spaces. Reversing Erosion. Renewable Energy. Green Micro-Grids. Resilient Cities. Harnessing Our Biodiversity. Reducing Emissions. Planting Trees. Protecting Our Future.

# 5. ENVIRONMENTAL SUSTAINABILITY

## PROTECTING OUR FUTURE

We will build in a way that does not destroy our children's tomorrow for short-term gains. Our progress will endure for future generations of Edo people to live, enjoy and build upon.

Our development agenda today must be different from what it would have been even 10 years ago. For us to create prosperity that is sustainable, two things must happen at the same time: we must develop faster than we have ever done, and we must develop cleaner than those that have gone ahead of us (because we know now that there are environmental consequences to our development and those consequences are beginning to impact upon our lives and livelihoods).

### Our Goal

Our goal is to arrest existing environmental challenges including deforestation, climate change and erosion (among others) and achieve a 30% increase in green spaces and renewable energy usage across Edo State by 2030.

We will plant 500,000 trees within our first year in office and scale up to 1,000,000 trees by the second year.



### SUSTAINABLE DEVELOPMENT

We will prioritise new climate-friendly infrastructure and development solutions that can provide immediate remedies to our problems, without making the situation worse in the long run:

- Resolution of our gully erosion challenges in line with international standards, as part of our infrastructure overhaul.
- Rural electrification with the deployment of community owned solar and waste-to-energy micro-grid solutions – enabling our rural communities to generate their own power, while capturing heat and disposing of farm/household waste at the same time.
- New and less environmentally destructive dust-control technologies for our interior roads.
- Climate-resilient seed varieties and training in restorative farming practices for smallholder farmers and farming cooperatives.
- Prioritization of our Mangrove Restoration Initiative with biodiversity-linked grant funding for the reinvention of aquaculture in our coastline communities around Gele- Gele, Ovia River, Ossiomo River, Osse River, Ikpoba, etc
- Scaling up of the important work of the Edo State Flood, Erosion and Watershed Management Agency (FEWMA) - to enable them extend erosion and flood control infrastructure across all parts of Edo State.
- Reduction of housing constructions costs, using innovative models, and attracting the manufacturers of basic and sustainable construction materials to Edo State for export and for use in the state.



### FINANCING OUR SUSTAINABILITY

In the last five years, development finance institutions (DFIs) have opened up new grant and interest-free funding windows for projects with sustainability credentials. We will take advantage of all applicable financial windows to attract concessional and grant funding to ensure that our development agenda costs less, not more.

- Establishment of a Climate Finance Unit within the State Ministry of Finance, to build specialised climate finance capacity to attract global grants, integrate Edo with voluntary carbon markets, and other sustainability-linked funding options.
- SDG training for key staff in our MDAs to build the capacity to attract investment in our sustainability-compliant growth initiatives.
- Deliberate targeting of foreign direct investment in value chains that integrate Edo with the fast-growing global green economy, producing items like EV batteries for global markets from our lithium deposits.

# ASUERINME

## THE MAN

My name is Asuerinme Ighodalo. I am the son of Jeremiah and Folayegbe Ighodalo from Okaigben, Ewohimi, in Esan South East Local Government of Edo State.

My father, Jeremiah Aghedo Ighodalo, was one of the first people to attend secondary school in Ewohimi. He was a great father and leader who instilled in me the values of integrity, humility, and simplicity – all of which have made me who I am today. My mother, Folayegbe, was the first female permanent secretary in Nigeria. From her, I learnt the values of selfless service and dignity in labour.

My parents raised us (my older sister, Tolulope, my younger brother, Ituah, and me) to value hard work, and to focus on excellence. They both personified these traits and showed us, by their example, the importance of hope, perseverance and the transformative power of education.

I attended King's College, Lagos and then the University of Ibadan, where I obtained a degree in Economics in 1981. I proceeded to the London School of Economics and Political Science, graduated in 1984, and went on to the Nigeria Law School in Lagos. In 1985, I was called to the Nigerian Bar.

I began my legal career as an associate at the law firm of Chris Ogunbanjo and Co., and worked there for five years. I left to set up the law firm, Banwo and Ighodalo in partnership with my friend, Femi Olubanwo in 1991.

Through hard work, and by the abiding grace of God, we have successfully built one of Nigeria's foremost corporate law firms with 17 partners and more than 100 lawyers across 3 offices in Nigeria.

## A PROUD FAMILY MAN

I met my wife, Ifeyinwa, and we got married in 1990 – just as I was starting a new journey as an entrepreneur. I can honestly say that it was one of the best decisions of my life. For nearly 35 years, her remarkable support and unrelenting encouragement have been invaluable. The family we have built, and the joy of raising our daughter – Omoehi - from helpless infant to confident young woman, has been one of the anchors of my life.

I have worked hard. But far more than that, I have truly been blessed. This Simple Edo Boy has been shown God's Grace and lives with a grateful heart.

## AN ASTUTE PROFESSIONAL

My core areas of practice are Corporate and Commercial Law, Project Finance, Securities & Capital Markets, Energy & Natural Resources, and Mergers & Acquisitions.

By the special grace of God, I have been consistently ranked as a "Tier 1" lawyer in my areas of practice by the leading global legal directories. In 2003, I was admitted to the Chambers 500 Hall of Fame. I have authored many articles in leading law publications and also delivered several presentations on diverse subjects. I also taught Corporate Governance at the Lagos Business School.

## A CORPORATE TITAN

I was the Chairman, Board of Directors: Dangote Flour Mills, Nigeria Economic Summit Group (NESG), Sterling Bank Plc, Nigerian Breweries Plc., and Levene Energy Group.

I also previously sat on the boards of Union Bank UK Plc, Kakawa Discount House, Mainstreet Technologies Limited, Cardinal Stone Partners, Okomu Oil Palm Plc, Christopher Kolade Foundation, Fate Foundation, and the Nigeria Sovereign Investment Authority (NSIA).

I resigned all these board positions, and suspended my legal career, at the end of 2023, to run for the Office of the Governor of Edo State, offering myself, in service, to the good people of Edo State.

## PAST SERVICE TO EDO STATE

Asue has been actively engaged with Edo State for the last 16 years. He served on the economic team of Governor Comrade Adams Oshiomhole, providing insights and inputs on the development of key government policies and programmes; leading to reforms implemented by that administration.

Over the past 7 years, he has served as Chairman of Alaghadaro Economic Summit Limited/Gte, a private sector think tank that has organised the Alaghadaro Summit, and made recommendations that have attracted significant investments to Edo State.

## A NATIONAL LEADER

He was a member of Concerned Professionals, an alliance of private sector professionals- who spoke out against military dictatorship and agitated for the restoration of democracy. He was the group's NADECO representative.

He was Chairman of Nigeria Economic Summit Group, and previously served on the board of the Nigeria Sovereign Investment Authority. He also served as Chairman, Securities and Exchange Commission (SEC) Technical Committee on Demutualization of the Nigerian Stock Exchange and also advise the Federal Government on the Power Sector Reforms.



## His Past Contributions to His Community



### Bringing Electricity to Ewohimi

In 1999, AI intervened and lobbied the then Minister of Power, Chief Bola Ige to run the first set of electricity cables from the National Grid into Ewohimi.



### Building of the Church Roof

Constructed the roof of the St. Joseph Catholic Church, Okaigben, Ewohimi and has been making contributions to the Church ever since.



### Provision of Water to 8 Communities

Drilling of 210m deep borehole at Uzebu Health Centre, powered by a dedicated 20KVA generator (including constant supply of diesel). Project serves 8 different communities and provides access to clean, potable water.

## His Past Contributions to His Community



### Provision of Water to Okaigben Primary School

Drilling of borehole at Okaigben Primary School to support the students, administrators and community have dedicated access to clean water.



### Care Clinic During Covid-19

Provided care clinic and medical support to the community during covid-19. This includes screenings and provision of medicines where necessary.



### Bendel Insurance Sponsorship

Facilitated the largest sponsorship received by Bendel Insurance. This helped return the great Bendel Insurance to the Nigerian Professional Football League (NPFL).



### 33KVA Electricity Line Across 4 Communities

Rehabilitation of the 33kVA electricity distribution network to restore electricity to four communities. The project began from Ebelle to Ewossa, Ekpon and Ewohimi. More than 70,000 people impacted by this investment by AI.



### Scholarship Program

Financial scholarship and support to numerous students. This covers yearly university tuition and monthly stipends for indigenes of Ewohimi.



### Widows Support

Since 2019, AI has donated 50,000 each to numerous widows across Ewohimi to support them and their families.



### Establishment and Major Funding For Skills Acquisition Centre

Made significant contributions to set up the dressmaking, fashion and traditional weaving department of the Idinro Vocational & Skill Development Centre (through his beloved sister, Chief (Ms) Amiehi Ighodalo).



### Contributions for the Renovation of the Onoje's Palace

Support to ensure the renovation and rehabilitation of the Palace of the revered Onoje of Ewohimi.



### Rural Women Economic Transformation Program

In partnership with Sterling Bank, AI contributed 50% of the economic empowerment funds accessible at single digit interest rates to help rural women access finance to grow their businesses.



### Facilitating Road Construction & Rehabilitation

Lobbied the state government for the construction and rehabilitation of several roads across Ewohimi and Esan land in general.



### Motorcyclists Transport Support

In 2018, AI purchased and distributed motorcycles as well as crash helmets to okada riders across Ewohimi and other communities. The objective was to ease the burden of transportation, while also promoting safety.



### Medical Outreaches

Since 2018, AI and his family have sponsored free screening and treatment for indigent people within and around Ewohimi. This includes maternal care, care for the elderly and treatment/ intervention in extreme cases.



### Annual Christmas Season Gifting & Support

Christmas gifts, including food, drinks and financial support for women, children and the youths of Ewohimi.



### Training & Rehabilitation of Blind Students

Direct intervention in the lives of blind students to offer the training and financial support to improve the quality of their lives.



### Teacher Support Program

Employment and payment of the salaries of teachers to supplement the existing teachers and boost education in Okaigben Primary School.

# A WINNING TEAM



## OSARODION OGIE ESQ: A PROFILE IN EXCELLENCE

Mr. Osarodion Ogie is a distinguished leader, a visionary, and dedicated public servant whose career has been marked by a relentless pursuit of excellence and a deep commitment to the advancement of Edo State and all its people.

He began his education in 1967 at St. Saviour Primary School, Benin City and proceeded to Eghosa Grammar School in 1973. In 1981, he gained admission to study Law at the Prestigious Obafemi Awolowo University (OAU), Ile-Ife where he graduated with a Bachelor of Laws Degree (LL.B.) with Honours.

Upon graduation in 1985, he attended the Nigeria Law School in Lagos where he obtained his Barrister at of Law (B.L) in 1986 and was subsequently called to the Nigerian Bar the same year.

In 1987, he established the Law Firm of Osarodion Ogie and Co., Legal Practitioners in Lagos in 1988. His Legal practice spanned different sectors, including Company Law, Criminal Law and Election Litigation among others.

Mr. Osarodion Ogie is a humble, compassionate advocate for people. With a burning desire to serve them, he delved into public service in 2000.

In his role as a public servant, Osarodion Ogie has demonstrated exceptional leadership and administrative acumen. Serving in various capacities within the Edo State government, he has been instrumental in driving significant reforms and initiatives that have transformed the state and the lives of the people.

Osarodion Ogie (Esq.) is a committed Bar man and belongs to a number of Professional Associations e.g. the Nigeria Bar Association (NBA), International Bar Association (IBA), Individual Tax and Private Client Committee of IBA, IBA section on Energy, Environment, Natural Science and Infrastructure Law, IBA Real Estate Committee, IBA Taxes Committee. He is a philanthropist and an honorary member of the Rotary Club of Benin.

As a result of his meritorious service to Edo State, he was honoured in 2007 with a Certificate of Honour by the Oba of Benin as a Benin Achiever. Also in 2011, he was honoured as a Knight Commander, Order of Peacock, COP (Island Club Lagos). A distinguished member of Benin Club, Benin and Ikoyi Club, Lagos.

Mr. Osarodion Ogie (Esq) is a Christian and married with children. His hobbies include playing golf, football and reading.



**In Conclusion...**

Together, we will build a more prosperous, just, and sustainable Edo state that empowers every individual with the opportunity to contribute positively to our common goals.

**WE GO DO AM**



[www.asueighodalo.org](http://www.asueighodalo.org)